

Geriatric Nurse Practitioner Screening Practices for Cognitive Impairment in the Older Adult

Firas Atef Abu Hussein*

*Faculty of Graduate studies, Arab American University, 13 Zababdeh, P.O. box 240, Jenin Palastine, Email: firas.alzain.1986@gmail.com

Abstract

Objectives: The objective of this systematic review is to comprehensively evaluate screening practices for cognitive impairment in older adults, emphasizing the critical role of Geriatric Nursing Practitioner practitioners.

Methodology: A systematic literature search of the major databases, inclusive of PubMed, PsycINFO, and Cochrane library was carried out. The search was keywords centered on articles that dealt with cognitive impairment screening in older adults with mental health problems. Articles were carefully chosen according to the inclusion criteria such as only those articles which had been published during the last nine years and had undergone a peer-review process. Data extraction process involved identification of screening methods, participant characteristics, and major findings. The quality assessment made sure that the chosen literature was of good reliability, and data synthesis identified common factors such as similarities and differences between various studies.

Results: The search resulted to 144 articles but after intensive screening, 20 of them were included in the review. Results were reported from different healthcare settings, showing both the frequency and the effectiveness of screening tools for identifying cognitive impairment. The role of nurse practitioners was identified in the selected articles, more particularly in establishment of screening systems, use tools for identification, and practice advanced roles. The synthesis revealed the role of patient-centred treatment, all-rounded approaches, and the opportunity of blending cognitive screening with routine healthcare practices.

Keywords: Nurse practitioners, cognitive impairment, screening tools, older adult and mental health

Introduction

The world aging population has resulted to an increase of age-related health problems which the health sector has had to deal with. Of the emanating difficulties, cognitive impairment in the elderly stands out as a critical issue, both for the patients themselves, their relatives, and the healthcare system. The early diagnosis of cognitive impairment is of vital importance as it allows for timely intervention giving a good control over symptoms and at least slowing the rate of cognitive deterioration. Cognitive decline—from mild cognitive impairment to the severity of dementia—is a huge threat to public health. The ramifications are not only confined to the personal strata but also branches into the societal and economic levels. Recognizing cognitive decline in its initial stages may give an opportunity to apply interventions, which in the long run can improve the quality of life of the affected people and decrease the burden on healthcare systems.

However, this can only be realized if appropriate screening approaches are implemented so as to accurately identify various cognitive impairments. This systematic review intends to respond to this urgent need by analyzing the current screening practices used as a diagnostic step in the process of detecting cognitive impairment in the older adult population. This systematic review will involve synthesis of the status of cognitive impairment screening in the elderly through a critical review of an extensive range of studies, which cover an array of screening tools and methodologies. By doing this, the focus is to provide a comprehensive understanding on the role of geriatric assessment and identification of cognitive decline and prevention of complications and deterioration

Methodology

Quantitative systematic review was conducted using Cochrane Collaboration systematic review methods to specify inclusion and exclusion criteria, search and retrieve relevant studies, appraise study quality, and synthesize findings.

Search Strategy and Inclusion Criteria.

In the attempt to capture the nuances of the screening practices for cognitive impairments in older adults with coexisting neuropsychiatric disorders, a systematic literature search was systematically conducted. A broad search strategy, comprising of keywords such as, "cognitive impairment", "screening tools", "older adults" and "mental health", was used for the major databases- PubMed, PsycINFO and Cochrane Library. This approach went further to create a wide net,

ensuring the inclusion of multiple and relevant studies on the intersection of cognitive impairment and mental health problems among the elderly. Only peer reviewed articles which discussed screening for elderly people and particularly on mental conditions were included.

Exclusion Criteria

The exclusion criteria were applied rigorously in order to prevent the review's lack of focus and relevance. The articles not falling into the nine-year period were not included in the study to be timely and reflective of ongoing research themes. Non-peer-reviewed studies were also left out, because the objective was to draw on reliable, high-quality research and peer-reviewed. In addition, studies only focusing on one of the two, older adults and mental illness were excluded to keep the focus of the review more specific. Articles which did not apply the screening for cognitive impairment, were downscaled to provide relevant and consistent analysis of screening practices.

Data Extraction

Essential info was extracted from the studies by using a systemic and rigorous data extraction. Methodologies of screening, characteristics of the participants and results specifically to cognitive impairment screening were collected systematically. The thorough approach was undertaken in order to grab diverse spectrum of screening tools and procedures utilized in the selected studies resulting into a solid basis for further analysis.

Quality Assessment

All the articles selected were subjected to a very strict quality control as this is a key factor of reliability and validity of systematic reviews. Key components such as study methods, sample size, research design, and statistical analysis were given extensive attention. This aspect nourished the reliability of the selected literature in a huge way, thus laying a firm base for the systematic review to be conducted on top of the quality researches.

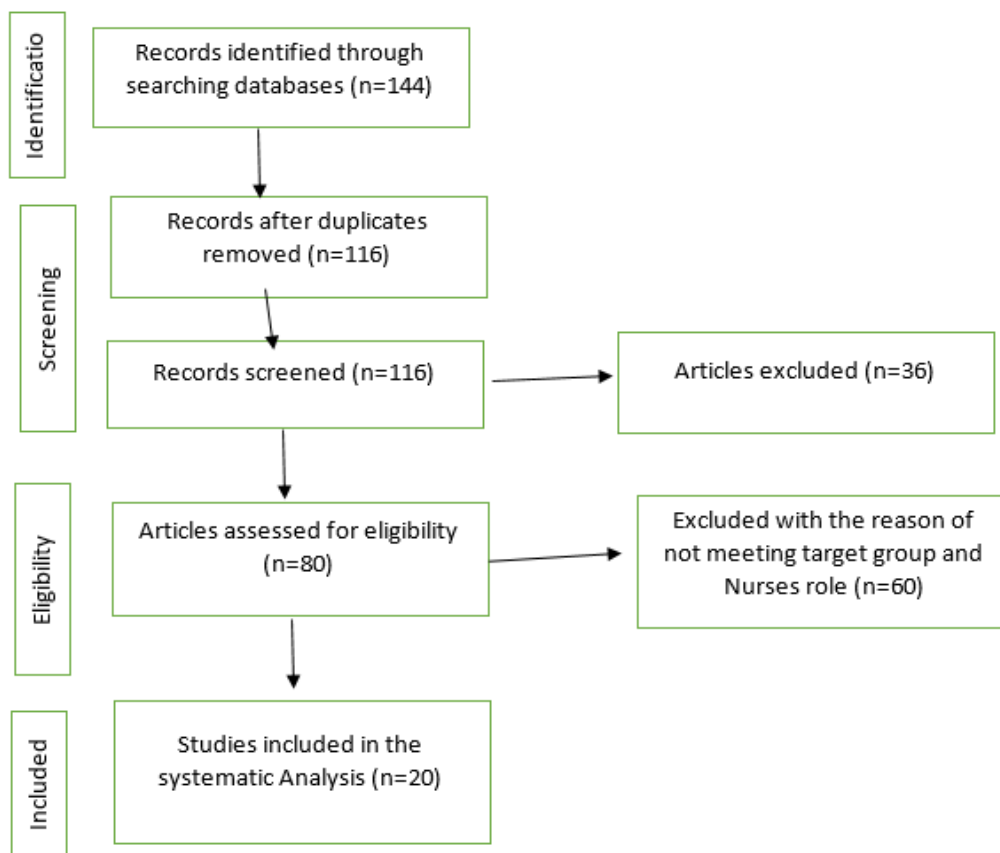
Data Synthesis

The data were synthesized using a mapping process to identify patterns and outliers in the screening practices described in the articles under review. Patterns of screening tools' effectiveness, demographic changes and emerging ideas were classified using a systematic analysis method. The synthesis thus constituted the foundation for the succeeding results and discussion sections of the systematic review, which further aimed to provide a more vivid and adequately evidence-based feedback on the status of cognitive screening practices in older adults having mental health problems.

Through a careful application of a rigorous systematic search strategy, a robust selection criteria, a detailed data extraction, and a thorough quality assessment, the present systematic review promised to provide a thorough and evidence-based investigation of cognitive impairment screening practices in geriatric population with co-existing mental health problems.

Results

144 of the 9-year period articles were gotten after research. Following the process of deleting duplicates, the total number of articles became 116. From these articles, the rest were screened by the title and abstract and 35 articles were excluded due to the language, article types, and no studies' settings. At the end of the evaluation, only 20 articles were selected for this meta-analysis. This is depicted in the study selection flow diagram (PRISMA) as depicted below;



Article Title	Authors and Journal	Publication Year	Purpose
Appropriate care for older people with cognitive impairment in hospital	Caplan, G. A., Kurrle, S. E., & Cumming, A. (2016). Medical Journal of Australia, 205(S10), S12-S15.	2016	Emphasizes the necessity for appropriate delirium care, including systematic screening, assessment, and a comprehensive workup, for older adults with cognitive impairment in hospitals.
Screening positive for cognitive impairment: impact on healthcare utilization and provider action in primary and specialty care practices	Rosenbloom, M., Barclay, T. R., Borson, S., ... & Hanson, L. R. (2018). Journal of general internal medicine, 33, 1746-1751.	2018	Evaluates the impact of screening for cognitive impairment on healthcare utilization in primary and specialty care practices, emphasizing the need for a more comprehensive approach to address cognitive impairment.
Validity and reliability of the 6-item cognitive impairment test for screening cognitive impairment: a review	O'Sullivan, D., O'Regan, N. A., & Timmons, S. (2016). Dementia and geriatric cognitive disorders, 42(1-2), 42-49.	2016	Highlights the potential of the Six-Item Cognitive Impairment Test (6-CIT) for cognitive screening in primary and secondary care settings, acknowledging the need for further validation, especially in primary care. Emphasizes the importance of fast and reliable cognitive screening instruments in acute settings.
Screening instruments for cognitive impairment in older patients in the Emergency Department: a systematic review and meta-analysis	Calf, A. H., Pouw, M. A., ... & Smidt, N. (2021). Age and Ageing, 50(1), 105-112.	2021	Focuses on older patients in the Emergency Department (ED) and evaluates various cognitive screening instruments, recommending the Ottawa 3 Day Year (O3DY) and the 4 A's Test (4AT) for ruling out cognitive impairment. The study recognizes the challenges of recommending a single diagnostic test due to heterogeneity but suggests these two instruments for ED settings.
Annual cognitive assessment for older adults: Update for nurses	Wiese, L. K., & Williams, C. L. (2015). Journal of Community Health Nursing, 32(4), 187-198.	2015	Discusses the integration of cognitive screening into the annual wellness visit for older adults, emphasizing the role of geriatric nurses and the importance of awareness regarding available benefits.
Satisfaction with a family-focused intervention for mild cognitive impairment dyads	Lu, Y. Y. F., Ellis, J., Yang, Z., Weaver, M. T., Bakas, T., Austrom, M. G., & Haase, J. E. Journal of Nursing Scholarship Volume 48	2016	This article investigates the satisfaction of persons with mild cognitive impairment (PwMCI) and their caregivers with the Daily Enhancement of Meaningful Activity (DEMA) intervention, delivered by trained geriatric nurses. In a randomized controlled pilot study, 17 PwMCI-caregiver dyads receiving DEMAs were compared to a control group (19 dyads). The six-session intervention, incorporating in-person and telephone meetings, demonstrated significantly higher satisfaction among PwMCI (p = .033), while caregiver satisfaction remained consistent. Qualitative data supported DEMAs usefulness, ease of use, and acceptability. These findings underscore DEMAs potential to enhance PwMCI's engagement in

Article Title	Authors and Journal	Publication Year	Purpose
			meaningful activities, with implications for improving overall quality of life.
Comparing the sensitivity, specificity, and predictive values of the Montreal Cognitive Assessment and Mini-Mental State Examination when screening people for mild cognitive impairment and dementia in Chinese population	Tsai, J. C., Chen, C. W., ... & Chou, K. R. (2016). Archives of psychiatric nursing, 30(4), 486-491.	2016	Compares the sensitivity and specificity of the Montreal Cognitive Assessment (MoCA) and Mini-Mental State Examination (MMSE) in screening for mild cognitive impairment (MCI) and dementia in the Chinese population, emphasizing the role of geriatric nurses in administering and interpreting these assessments.
A systematic review of the effectiveness of advanced practice nurses in long-term care	Donald, F., Martin-Misener, R., ... & DiCenso, A. (2015). Journal of advanced nursing, 69(10), 2148-2161.	2015	Systematic review focusing on advanced practice nursing roles in long-term care settings, revealing improvements in health measures and behaviors among older adults associated with the presence of advanced practice nurses. Emphasizes the potential of advanced practice geriatric nurses in enhancing overall care quality.
Subjective cognitive decline, mild cognitive impairment, and dementia-syndromic approach: recommendations of the Scientific Department of Cognitive Neurology and Aging of the Brazilian Academy of Neurology	Smid, J., Studart-Neto, A., ... & Vale, F. A. C. (2022). Dementia & Neuropsychologia, 16, 1-24.	2022	Consensus from the Brazilian Academy of Neurology providing guidance on evaluating and diagnosing cognitive decline in older adults, serving as a valuable resource for healthcare practitioners, including geriatric nurses, involved in the cognitive assessment process.
The role of assessment in competence-based gerontological advanced practice nursing	Ferretti-Rebustini, R. E. D. L., ... & Blackberry, I. (2022). Revista da Escola de Enfermagem da USP, 56.	2022	Addresses the role of gerontological advanced practice nurses (GAPN) through a theoretical essay, emphasizing the importance of comprehensive geriatric assessment in competence-based advanced nursing practice. Discusses various competencies required for GAPN. Emphasizes the role of geriatric nurses in providing holistic care.
Agreement on the use of sensory screening techniques by nurses for older adults with cognitive impairment in long-term care: a mixed-methods consensus approach	Wittich, W., Jarry, J., Höbner, F., & McGilton, K. S. (2019). BMJ open, 9(9), e027803.	2019	Focuses on sensory screening tools in long-term care homes, using a consensus approach to identify suitable screening tools for geriatric nurses. Highlights the significance of vision and hearing screening tools for assessing sensory impairments in older adults within long-term care settings.
Barriers and Facilitators to Screening for Cognitive Impairment in Australian Rural Health Services: A Pilot Study	MacDermott, S., McKechnie, R., & Pond, D. (2022). Geriatrics, 7(2), 35.	2022	Investigates cognitive screening barriers in rural and regional areas of Victoria, Australia, shedding light on the perceptions of healthcare staff. Emphasizes key facilitators and the crucial role of geriatric nurses in collaborative implementation processes, especially in rural settings.
Physician assistants and nurse practitioners in primary care plus: a systematic review	Van Erp, R. M. A., Van Doorn, A. L., Van Den Brink, G. T., Peters, J. W. B., Laurant, M. G. H., & Van Vught, A. J. <i>International Journal of Integrated Care</i>	2021	This article aims to explore the potential of shifting specialist care, particularly in geriatrics, from hospitals to primary care or community care settings, often referred to as primary care plus. The focus is on understanding the contributions of physician assistants and nurse practitioners, with specific attention given to the role of geriatric nurses, in delivering primary care plus. The systematic review seeks to provide insights into the effectiveness, barriers, and facilitators associated with this healthcare model, aiming to inform decision-makers on optimizing healthcare costs, improving quality of care, and enhancing accessibility, particularly in the context of geriatric patients.
Cognitive screening instruments for older adults with low educational and literacy levels: A systematic review	Pellicer-Espinosa, I., & Díaz-Orueta, U. (2022). Journal of Applied Gerontology, 41(4), 1222-1231.	2022	A systematic review and meta-analysis evaluating cognitive screening instruments for older patients in the Emergency Department (ED). Highlights the 4 A's Test (4AT) and Ottawa 3 Day Year (O3DY) as promising tools and implicates geriatric nurses in navigating complexity and utilizing effective screening tools.
A pilot feasibility randomized controlled trial on combining mind-body physical exercise, cognitive training, and nurse-led risk factor modification to reduce cognitive decline among older adults with mild cognitive impairment in primary care	Xu, Z., Zhang, D., ... & Wong, S. Y. (2020). PeerJ, 8, e9845.	2020	Examines the feasibility and effectiveness of combining mind-body physical exercise, cognitive training, and nurse-led risk factor modification to reduce cognitive decline in older adults with mild cognitive impairment (MCI). Highlights the role of geriatric nurses in multifaceted interventions.
Nurses' recognition of hospitalized older patients with delirium and cognitive impairment using the delirium observation screening scale: a prospective comparison study	Hasemann, W., Tolson, D., ... & Kressig, R. W. (2018). Journal of Gerontological Nursing, 44(12), 35-43.	2018	Reports findings about delirium detection in hospitalized older patients with cognitive impairment using the Delirium Observation Screening Scale (DOSS) in comparison to the Confusion Assessment Method (CAM). Highlights geriatric nurses' role in identifying delirium using observational methods.
What is the role of the practice nurse in the care of people living with dementia, or cognitive impairment, and their support	Gibson, C., Goeman, D., & Pond, D. (2020). Not specified.	2020	Systematically examines the existing and potential roles of practice nurses in delivering care to people affected by dementia, emphasizing geriatric nurses' characteristics and effectiveness in providing comprehensive dementia information and support.
Validity of screening tools for dementia and mild cognitive impairment among the elderly in primary health care: a systematic review	Abd Razak, M. A., Ahmad, N. A., ... & Jamaluddin, R. (2019). Public health, 169, 84-92.	2019	Provides updated and comprehensive evidence on the validity and feasibility of screening tools for mild cognitive impairment (MCI) and dementia among the elderly at primary healthcare level. Recommends Montreal Cognitive Assessment (MOCA) and Addenbrooke's Cognitive Examination (ACE) for screening. Emphasizes the role of geriatric nurses.
Nurses' knowledge and skills to manage patients with psychological distress in emergency departments	AlShibi, A. N., & Hamdan-Mansour, A. M. <i>The Open Nursing Journal</i> ,	2020	This article aims to investigate the knowledge and skills of registered nurses, with a specific focus on geriatric nurses, in managing patients with psychological distress within emergency departments. The study seeks to address the challenges faced by nurses working in emergency departments,

Article Title	Authors and Journal	Publication Year	Purpose
			especially those not specialized in psychiatric mental health, and identify areas where improvements are needed to ensure effective patient care.

In noting the prevalence of the mental issues, Caplan et al (2016) notes that the occurrence of cognitive impairment among elderly patients is massive. This puts a highlight on the need to give proper attention that includes systematic screening, assessment and extensive workup (Van Erpet al, 2021). In doing so, the author advocates for the adoption of Personal-focused and goal-oriented screening as this is more holistic from the older adults’ point of view. In the same note, Pellicer et al (2022), argue that the mostly used Mini-Mental State Examination (MMSE) by geriatric nursing practitioners in screening the mental state of elderly people tends to be biased. Therefore, as initially highlighted, there is the need to have a holistic approach to this screening process. Rosenbloom et al (2018) also evaluates the pattern of healthcare use in primary and specialty care practices in people with cognitive impairment detected during the screening. The study observed that screening alone as applied by the geriatric nursing practitioners may not be the solution as it does not change the provider actions or provider post-screening utilization. Such an observation indicates that there is the need to find a better holistic solution to handle cognitive breakdowns amongst the elderly population. In this, O’Sullivan et al (2016) advocates for the adoption of the Six-Item Cognitive Impairment Test (6-CIT) for cognitive screening across primary and secondary care by geriatric nurses. Nevertheless, the author advocates further validations, particularly in primary care. This research underlines the need for quick and reliable cognitive screening tests in the emergency setting. Xu et al (2020) further notes the need for integrating the geriatric nursing -led risk factor modification (RFM) and Health Advice (HA) in making sure a holistic and effective screening and intervention is realized for the mental issues amongst the elderly population.

Calf et al (2021) investigates the many different cognitive screening instruments. The Ottawa 3 Day Year (O3DY) and the 4 A’s Test (4AT) can be seen as a great aid in the process of ruling out cognitive decline. The work acknowledges the diversities inherent in using one diagnostic test and thus recommends the two modalities in ED settings. As such, there is the need of having inclusive cognitive screening into the annual wellness visit. Wiese & Williams (2015) underlines the crucial position of geriatric nursing practitioners and the need to raise public consciousness about existing benefits. According to the author, the geriatric nursing practitioners should purpose to diversify the screening approaches by making sure they make use of more than one screening tool. By doing so, it will be possible to validate each cognitive issue case. This is also reflected by Hasemann et al (2018) who state that using observation approaches such as the Delirium Observation Screening Scale (DOSS) is not enough in detecting mental issues amongst elderly population. Instead, this should be combined with the formal attention tests.

Lu et al (2016) further advocates for the building of a geriatric nurse-initiated screening system for mild cognitive impairment (MCI) in old adults living with diabetes. This screening approach should have demographic, lifestyle and neuropsychological processes, aligned with the global community’s efforts to detect and fight cognitive impairment in the early stages. This is supported by the work of Tsai et al, (2016) who advocates for the sensitivity and specificity of the Montreal Cognitive Assessment (MoCA) and the Mini-Mental State Examination (MMSE) to identify Mild cognitive impairment (MCI) and dementia screening. The results confer the MoCA facility for MCI screening and MMSE efficiency for dementia in the general population (Abd et al, 2019). The significance of the geriatric nursing practitioners in the application and testing of these evaluations is particularly crucial to deliver correct assessments (Gibson et al, 2018). In this, Donald et al (2015) states that having experienced geriatric nursing practitioners is connected to improved outcomes on diverse health measures and behaviors among the older adults. This underlines the capacities of advanced practice geriatric nurses to support the quality of care for older adults’ facilities through effective and tailored interventions. According to the author, effective and efficient screening requires decent experience and hence it is necessary to make sure the nurse practitioners have adequate exposure to various intervention methods.

Smid et al (2022) provides guideline that contributes valuable suggestions on evaluating and diagnosing cognitive decline in the elderly population. According to the authors, SCD and MCI stages that are followed by dementia, revealing the necessary cognitive tests and the work-ups ought to be kept into consideration by geriatric nursing practitioners working with older adults with cognitive issues. In this, Ferretti-Rebustini et al (2022) underline the fact that geriatric assessment is continuous and comprehensive in the advanced nursing practice. As such, geriatric nurses doing the screening must be Patient-centered to make sure they effectively provide comprehensive care for older adults, which includes cognitive assessments. Therefore, geriatric nurse practitioners are so important in the process of cognitive impairment detection through screening practices. Whether it is about setting up the screening systems, using specific evaluation tools or manipulating the advanced practice roles, geriatric nurse practitioners are the backbone of the care of cognitive health issues of older adults. In accordance with Wittich et al (2019), who speak about the sensory screening tools in long-term care homes, geriatric nurses are part of a consensus process, which basically is a mechanism for selecting the screening tools. The importance of screening tests that include hand movement and counting fingers testing, and hearing screening

like Hearing Handicap Inventory for the Elderly and Whisper Test are emphasized in the study. These tools are the most necessary for assessing the sensory impairments in the elderly people in long-term care settings being highly valuable for the nurse practitioners who participate in cognitive screening practices. MacDermott et al, (2022) look into the mental health screening barriers encountered by geriatric nursing practitioners in rural and remote areas. The research stresses on the main enablers being legislation, staff buy-in, and training and inter-organizational communications. In this respect, nurse practitioners play a crucial role in collaborative processes at implementing the strategies described above and surmounting contextual challenges, especially in rural areas.

In the study by Yang et al (2015), the authors advocate for innovative geriatric nurse-led cognitive screening model for outpatients with subjective memory complaint. Planning for cognitive screening as part of annual health examinations appears to be realistic after all within primary care. Although the research demonstrates the need for additional support services in a primary care for ones with cognitive impairments, it brings into focus the changing role of geriatric nurse practitioners in delivering comprehensive care to patients. These changing roles are also reflected by Van et al (2021) who notes that geriatric nurse practitioners take an active part in the prevention and control of referral pathways for screening activities as well as allocation of resources. In the same note AlShibi & Hamdan-Mansour (2020) postulates that nurses responsible for mental health screening especially in emergency departments ought to have not just the basic nursing education but advanced knowledge such as risk assessment, triage tools, care pathways, and many others.

Conclusion

Collectively, the reviewed articles highlight the indispensable role of geriatric nurse practitioners in screening practices for cognitive impairment. From constructing screening systems to utilizing specific assessment tools and leveraging advanced practice roles, geriatric nurse practitioners emerge as pivotal contributors to addressing cognitive health challenges in older adults. The emphasis on collaborative implementation processes, addressing contextual challenges, and the incorporation of innovative approaches underscores the evolving and critical role of nurse practitioners in holistic patient care.

References

1. Abd Razak, M. A., Ahmad, N. A., Chan, Y. Y., Kasim, N. M., Yusof, M., Ghani, M. A. & Jamaluddin, R. (2019). Validity of screening tools for dementia and mild cognitive impairment among the elderly in primary health care: a systematic review. *Public health*, 169, 84-92.
2. Calf, A. H., Pouw, M. A., van Munster, B. C., Burgerhof, J. G., de Rooij, S. E., & Smidt, N. (2021). Screening instruments for cognitive impairment in older patients in the Emergency Department: a systematic review and meta-analysis. *Age and Ageing*, 50(1), 105-112.
3. Caplan, G. A., Kurrle, S. E., & Cumming, A. (2016). Appropriate care for older people with cognitive impairment in hospital. *Medical Journal of Australia*, 205(S10), S12-S15.
4. Van Erp, R. M. A., Van Doorn, A. L., Van Den Brink, G. T., Peters, J. W. B., Laurant, M. G. H., & Van Vught, A. J. (2021). Physician assistants and nurse practitioners in primary care plus: a systematic review. *International Journal of Integrated Care*, 21(1).
5. Donald, F., Martin-Misener, R., Carter, N., Donald, E. E., Kaasalainen, S., Wickson-Griffiths, A., ... & DiCenso, A. (2015). A systematic review of the effectiveness of advanced practice nurses in long-term care. *Journal of advanced nursing*, 69(10), 2148-2161.
6. Ferretti-Rebustini, R. E. D. L., Souza-Talarico, J. N. D., Fhon, J. R. S., & Greenberg, S. A. (2022). The role of assessment in competence-based gerontological advanced practice nursing. *Revista da Escola de Enfermagem da USP*, 56.
7. Gibson, C., Goeman, D., & Pond, D. (2020). What is the role of the practice nurse in the care of people living with dementia, or cognitive impairment, and their support.
8. Hasemann, W., Tolson, D., Godwin, J., Spirig, R., Frei, I. A., & Kressig, R. W. (2018). Nurses' recognition of hospitalized older patients with delirium and cognitive impairment using the delirium observation screening scale: a prospective comparison study. *Journal of Gerontological Nursing*, 44(12), 35-43.
9. MacDermott, S., McKechnie, R., LoGiudice, D., Morgan, D., & Blackberry, I. (2022). Barriers and Facilitators to Screening for Cognitive Impairment in Australian Rural Health Services: A Pilot Study. *Geriatrics*, 7(2), 35.
10. Lu, Y. Y. F., Ellis, J., Yang, Z., Weaver, M. T., Bakas, T., Austrom, M. G., & Haase, J. E. (2016). Satisfaction with a family-focused intervention for mild cognitive impairment dyads. *Journal of nursing scholarship*, 48(4), 334-344. <http://library.stikespantirapih.ac.id/downloads/Journal%20of%20Nursing%20Scholarship%20Volume%2048%20Tahun%202016,%20No%204.pdf>
11. O'Sullivan, D., O'Regan, N. A., & Timmons, S. (2016). Validity and reliability of the 6-item cognitive impairment test for screening cognitive impairment: a review. *Dementia and geriatric cognitive disorders*, 42(1-2), 42-49.

12. Pellicer-Espinosa, I., & Díaz-Orueta, U. (2022). Cognitive screening instruments for older adults with low educational and literacy levels: A systematic review. *Journal of Applied Gerontology*, 41(4), 1222-1231.
13. Rosenbloom, M., Barclay, T. R., Borson, S., Werner, A. M., Erickson, L. O., Crow, J. M., ... & Hanson, L. R. (2018). Screening positive for cognitive impairment: impact on healthcare utilization and provider action in primary and specialty care practices. *Journal of general internal medicine*, 33, 1746-1751.
14. Smid, J., Studart-Neto, A., César-Freitas, K. G., Dourado, M. C. N., Kochhann, R., Barbosa, B. J. A. P., ... & Vale, F. A. C. (2022). Subjective cognitive decline, mild cognitive impairment, and dementia-syndromic approach: recommendations of the Scientific Department of Cognitive Neurology and Aging of the Brazilian Academy of Neurology. *Dementia & Neuropsychologia*, 16, 1-24.
15. Tsai, J. C., Chen, C. W., Chu, H., Yang, H. L., Chung, M. H., Liao, Y. M., & Chou, K. R. (2016). Comparing the sensitivity, specificity, and predictive values of the Montreal Cognitive Assessment and Mini-Mental State Examination when screening people for mild cognitive impairment and dementia in Chinese population. *Archives of psychiatric nursing*, 30(4), 486-491.
16. Wiese, L. K., & Williams, C. L. (2015). Annual cognitive assessment for older adults: Update for nurses. *Journal of Community Health Nursing*, 32(4), 187-198.
17. Wittich, W., Jarry, J., Höbler, F., & McGilton, K. S. (2019). Agreement on the use of sensory screening techniques by nurses for older adults with cognitive impairment in long-term care: a mixed-methods consensus approach. *BMJ open*, 9(9), e027803.
18. Xu, Z., Zhang, D., Lee, A. T., Sit, R. W., Wong, C., Lee, E. K., ... & Wong, S. Y. (2020). A pilot feasibility randomized controlled trial on combining mind-body physical exercise, cognitive training, and nurse-led risk factor modification to reduce cognitive decline among older adults with mild cognitive impairment in primary care. *PeerJ*, 8, e9845.
19. Yang, Y., Xiao, L. D., Deng, L., Wang, Y., Li, M., & Ullah, S. (2015). Nurse-led cognitive screening model for older adults in primary care. *Geriatrics & gerontology international*, 15(6), 721-728.
20. AlShibi, A. N., & Hamdan-Mansour, A. M. (2020). Nurses' knowledge and skills to manage patients with psychological distress in emergency departments. *The Open Nursing Journal*, 14(1). <https://opennursingjournal.com/VOLUME /14/PAGE/49/>